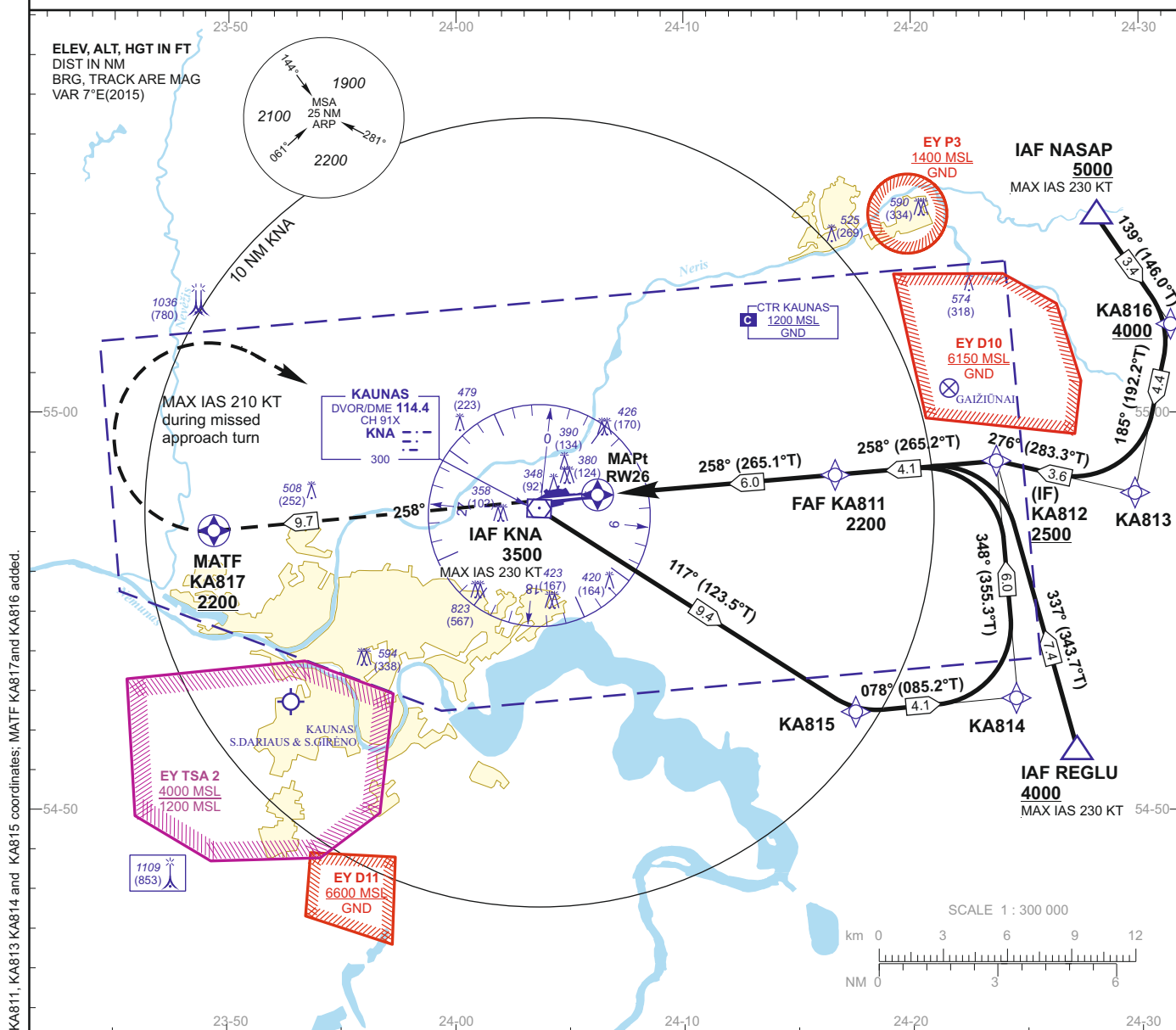


INSTRUMENT APPROACH
CHART - ICAOAERODROME ELEV 256
HEIGHTS RELATED TO
THR RWY 26 - ELEV 256TWR 124.200
118.500
ATIS 129.050KAUNAS
RNAV (GNSS) RWY 26

MISSED APPROACH PROCEDURE

TRANSITION ALT 5000

Climb on course 258° to KA817[A2200+],
then turn right [K210-], direct to IAF KNA
climbing to 3500.

DVOR/DME
KNA

FAF KA811

(IF) KA812

TCH 49

MAPt
RW26258°
(265.1°T)258° (265.2°T)
2200
(1944)

THR ELEV 256

NM to/from DTHR RWY 26 7 6 5 4 3 2 1 0 1 2 3 4 5 6 7 8 9 10 11 12
NM to/from DTHR RWY 26

OCA(OCH)		A	B	C	D	DIST DTHR RWY 26				5	4	3	2	
STRAIGHT-IN APPROACH	LNAV	690 (434)				Altitude				1890	1570	1260	940	
						Height				(1634)	(1314)	(1004)	(684)	
CIRCLING		see EYKA-AD-2.24-40 - 1				Timing not authorized for defining the MAPt								
Remark:						GS		Kts	80	100	120	140	160	180
						FAF-MAPt 6.0 NM		min:sec	4:30	3:36	3:00	2:34	2:15	2:00
						Rate of descent		ft/min	415	520	625	730	835	940
						For data tabulation see verso								

KAUNAS
RWY 26

AERONAUTICAL DATA TABULATION

RNAV (GNSS) INSTRUMENT APPROACH from IAFs(KNA, NASAP, REGLU)

IAF KNA

Serial Number	Path Descriptor	Waypoint Identifier	Fly-over	Course/Track °M(°T)	Magnetic Variation	Distance (NM)/ Time	Turn Direction	Altitude (FT)/ Flight level	Speed (KT)	VPA/TCH	Navigation Specification
001	IF	KNA	—	—	-6.8	—	—	3500	-230	—	RNP APCH
002	TF	KA815	—	117(123.5)	-6.8	9.4	—	—	—	—	RNP APCH
003	TF	KA814	—	078(085.2)	-6.8	4.1	—	—	—	—	RNP APCH
004	TF	KA812	—	348(355.3)	-6.8	6.0	—	+2500	—	—	RNP APCH
005	TF	KA811	—	258(265.2)	-6.8	4.1	—	2200	—	—	RNP APCH
006	TF	RW26	Y	258(265.1)	-6.8	6.0	—	690	—	-2.98/49	RNP APCH
007	CF	KA817	Y	258(265.1)	-6.8	9.7	—	+2200	-210	—	RNP APCH
008	DF	KNA	—	—	-6.8	—	R	3500	-230	—	RNP APCH

IAF NASAP

Serial Number	Path Descriptor	Waypoint Identifier	Fly-over	Course/Track °M(°T)	Magnetic Variation	Distance (NM)/ Time	Turn Direction	Altitude (FT)/ Flight level	Speed (KT)	VPA/TCH	Navigation Specification
001	IF	NASAP	—	—	-6.8	—	—	+5000	-230	—	RNP APCH
002	TF	KA816	—	139(146.0)	-6.8	3.4	—	+4000	—	—	RNP APCH
003	TF	KA813	—	185(192.2)	-6.8	4.4	—	—	—	—	RNP APCH
004	TF	KA812	—	276(283.3)	-6.8	3.6	—	+2500	—	—	RNP APCH
005	TF	KA811	—	258(265.2)	-6.8	4.1	—	2200	—	—	RNP APCH
006	TF	RW26	Y	258(265.1)	-6.8	6.0	—	690	—	-2.98/49	RNP APCH
007	CF	KA817	Y	258(265.1)	-6.8	9.7	—	+2200	-210	—	RNP APCH
008	DF	KNA	—	—	-6.8	—	R	3500	-230	—	RNP APCH

IAF REGLU

Serial Number	Path Descriptor	Waypoint Identifier	Fly-over	Course/Track °M(°T)	Magnetic Variation	Distance (NM)/ Time	Turn Direction	Altitude (FT)/ Flight level	Speed (KT)	VPA/TCH	Navigation Specification
001	IF	REGLU	—	—	-6.8	—	—	+4000	-230	—	RNP APCH
002	TF	KA812	—	337(343.7)	-6.8	7.4	—	+2500	—	—	RNP APCH
003	TF	KA811	—	258(265.2)	-6.8	4.1	—	2200	—	—	RNP APCH
004	TF	RW26	Y	258(265.1)	-6.8	6.0	—	690	—	-2.98/49	RNP APCH
005	CF	KA817	Y	258(265.1)	-6.8	9.7	—	+2200	-210	—	RNP APCH
006	DF	KNA	—	—	-6.8	—	R	3500	-230	—	RNP APCH

WAYPOINT COORDINATES

FIX/POINTS	COORDINATES	FIX/POINTS	COORDINATES
NASAP (IAF)	55 04 57.2N 024 28 10.6E	KA813	54 57 55.1N 024 29 51.4E
REGLU (IAF)	54 51 37.2N 024 27 23.7E	KA812 (IF)	54 58 44.4N 024 23 46.6E
KNA (IAF)	54 57 37.4N 024 03 59.1E	KA811 (FAF)	54 58 24.2N 024 16 42.0E
KA816	55 02 09.7N 024 31 27.3E	RW26 (MAPt)	54 57 53.8N 024 06 19.8E
KA815	54 52 26.0N 024 17 33.7E	KA817 (MATF)	54 57 02.8N 023 49 33.8E
KA814	54 52 46.2N 024 24 37.3E		